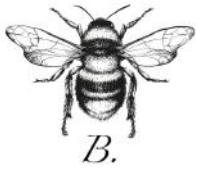


Brandon Wulff's Biscotti Process Quilt Top Sample



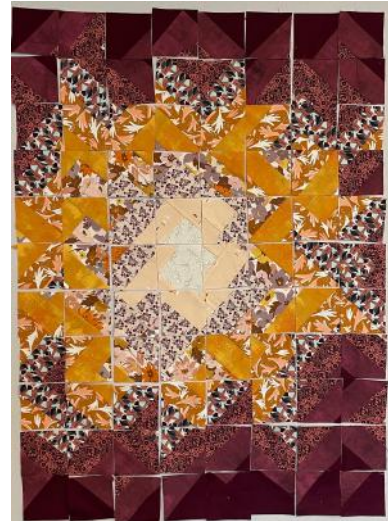
In this course you will learn Brandon Wulff's Biscotti process. We will make a sample quilt top measuring about 32 x 20 inches that can be configured in multiple ways. This versatile and creative process takes you through building a first Quilt top, the Chop and the reconfigure. Giving you all the tools to make a larger top at home.

We will:

- create community introducing ourselves,
- learn about the creation of the biscotti process and the work of Brandon Wulff
- start creating the first quilt top that will need to be completed by the following Saturday January 29th. (Failing to meet this goal will slow the whole group down so it is important to arrive on this Saturday with the first top.

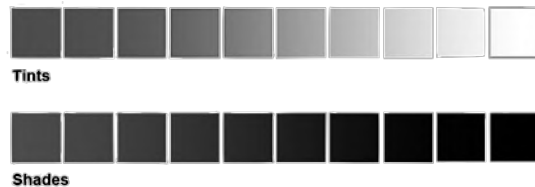
We will:

- reconfiguring it
- sew it back together.
- Complete the sample top.



Materials Needed

- Sewing machine with a 1/4 in. foot.
- Neutral thread or coordinating to your fabrics
- Have a stache of fabrics close by we will go through this process in the first call however we want a range of tones. The more contrast the better the result. Here is an example of tone range that we will explore more on the first call. I like to have a lot of variety of fabrics around so that I can be spontaneous. You will need a total of 10 fabrics but its best to have more on hand.



This quilt top can be made with 10 fat quarters. If possible cut width of fabric or the equivalent A mix of prints and solids works best.

- An 11th fabric that is solid for the last row will reduce salvage of a more inexpensive fabric.



- Rotary cutter
- if possible a 3.5 inch x 3.5 inch ruler or template would be handy but not 100% needed
- A standard 24 inch ruler
- Cutting mat

Brandon Wulff's Biscotti Process Quilt Top Sample

- Iron and Spray starch.
- A design wall

